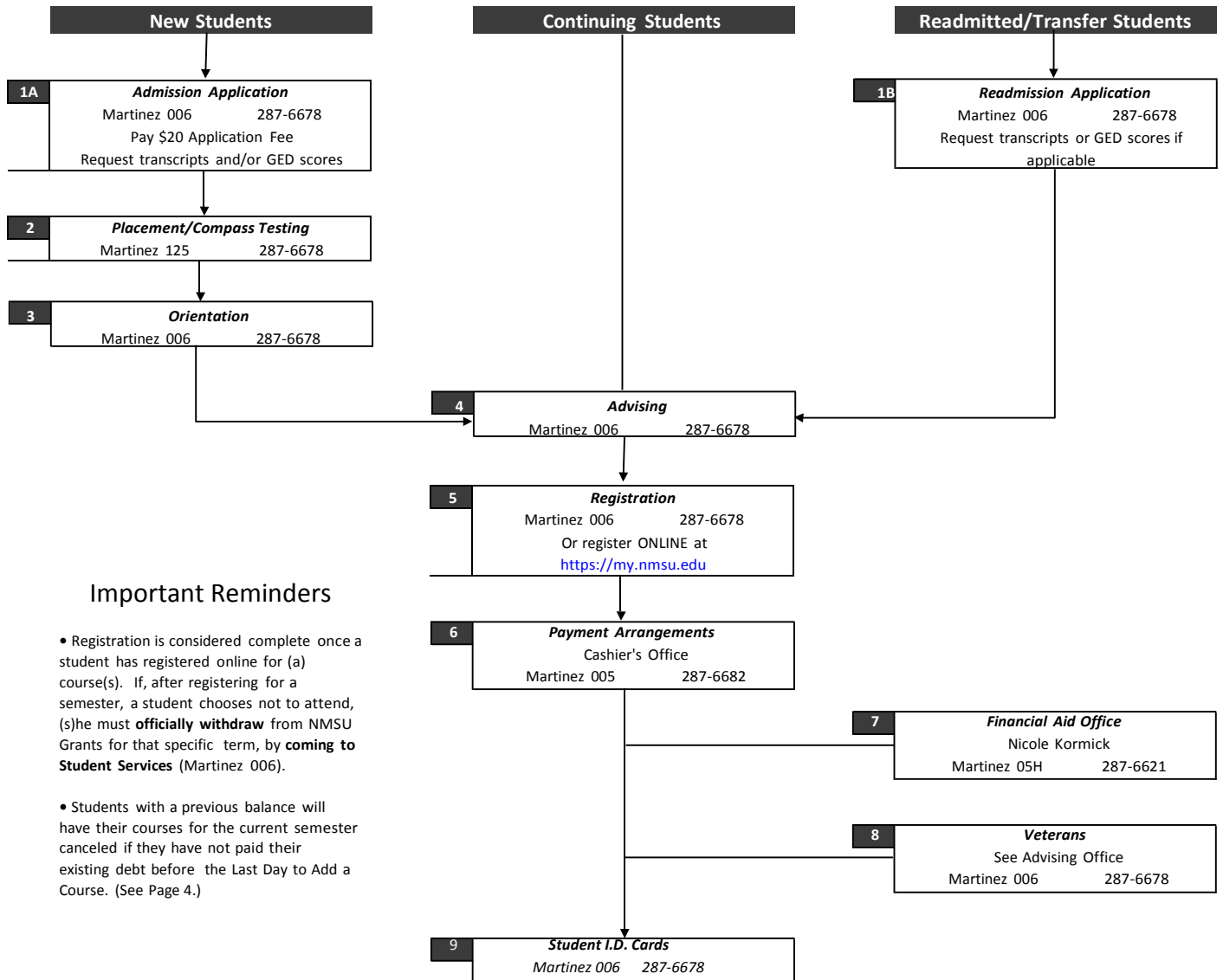


Spring 2016



Schedule of Classes

Steps to Register at NMSU Grants



Important Reminders

- Registration is considered complete once a student has registered online for (a) course(s). If, after registering for a semester, a student chooses not to attend, (s)he must **officially withdraw** from NMSU Grants for that specific term, by **coming to Student Services** (Martinez 006).
- Students with a previous balance will have their courses for the current semester canceled if they have not paid their existing debt before the Last Day to Add a Course. (See Page 4.)

Understanding the Flowchart

REFER TO TAB NUMBERS ON FLOWCHART BLOCKS

| Tab # | Explanation and Details |
|-------|--|
| 1A | Admission, New Students: Apply online at https://prospective.nmsu.edu |
| 1B | Admission, Readmitted and Transfer Students: Complete and submit an NMSU Application for Undergraduate Admission form or apply online at https://prospective.nmsu.edu |
| 2 | Testing: COMPASS assessments for class placement are required. For an appointment call NMSU Grants Testing Center, call 287-6640 Martinez 125). |
| 3 | Mandatory – New Student Orientation: Call 287-6678 to reserve a space at a NMSU Grants Orientation or sign up in the front office. * see page 4 for dates |
| 4 | Academic Advising: Walk-in for advising or call to make an appointment to meet with an academic advisor. For information about academic advising at NMSU Grants, call 287-6678. |
| 5, 6 | Registration and Payment Procedures: Refer to registration dates in the Spring Calendar (page 4). After academic advising, you must register for classes by logging in to https://my.nmsu.edu (see page 7). You are welcome to come into Student Services (Martinez 006) if you need assistance with the registration process. Once you have registered, your Schedule of Classes and Statement of Fees are available to you by logging into https://my.nmsu.edu . To make payment and complete the enrollment process, please make payment at the Cashier's Office (Martinez 005). Be sure to read and understand the section titled "Financial Obligation Assumed upon Registering for Courses" on pages 8-9. |
| 7 | Financial Aid Disbursement: Students registered at NMSU Grants may pick up disbursement checks at the Cashier's Office, (Martinez 005). |
| 8 | Veteran Students: Students with veteran's eligibility may be certified to receive educational benefits by registering with the Advisors in the Student Services Office, (Martinez 006). |
| 9 | Student I.D. Cards: Visit the Student Services Office (Martinez 006) if you need an NMSU Grants Student I.D. Card. |

Table of Contents

| | |
|--|-------|
| Admissions/Financial Aid..... | 12 |
| Calendar | 4 |
| Campus Programs/Policies..... | 11 |
| Distance Education/BSN Program | 13 |
| Instructional Support Services | 9 |
| MBS Virtual Bookstore..... | 6 |
| Online Registration | 5 |
| Refunds | 9 |
| Registration Checklist..... | 5 |
| Registration Schedule by classification..... | 5 |
| Release forms..... | 14 |
| Schedule of Classes..... | 15-23 |
| Service Hours..... | 6 |
| Terms & Conditions of Registration..... | 8-9 |
| Tuition & Fees..... | 7 |
| Whom to see..... | 3 |

Whom To See

Program Managers:

| | |
|--|----------|
| Applied Business/Pre Business -Harry Sheski | 287-6641 |
| Automotive Technology - Paul Garcia | 287-6635 |
| BSN (Nursing) - Donna LaPointe | 287-6667 |
| Building Trades – Earl Prewett | 287-6678 |
| College Studies – Brian Johnson | 287-6629 |
| Communications – Dr. Joan Erben | 287-6651 |
| Computer Science – Karen Henry | 287-6656 |
| Criminal Justice –Megan Stoneking | 287-6690 |
| Drafting/Welding - Richard Gutierrez | 287-6645 |
| Education – Kathleen O’Connor | 287-6693 |
| Electronics – Bruce McDowell | 287-6636 |
| Health Sciences - Neal Gallagher | 287-6654 |
| Humanities – Dr. William Serban | 287-6648 |
| Mathematics -Marlene Chavez-Toivanen | 287-6652 |
| Natural Sciences –David Stokowski | 287-6657 |
| Social Sciences - Megan Stoneking | 287-6690 |



All contents of this publication
are subject to change at anytime
by appropriate administrative procedure

| | |
|--|-----------------------|
| General Information | (505) 287-NMSU |
| University Services | |
| <i>Dr. Felicia Casados, Campus President</i> | 287-6624 |
| Academic Services | |
| <i>Dr. Harry Sheski, VP Academic Affairs</i> | 287-6641 |
| Admissions/Transcripts | |
| <i>Debbie Garcia</i> | 287-6632 |
| <i>Lisa Whitmore</i> | 287-6678 |
| Adult Education | |
| <i>Thomas McGaghie</i> | 287-6662 |
| Bachelors of Science in Education | |
| <i>Kathleen O’Connor</i> | 287-6693 |
| Business Services | 287-6653 |
| <i>Gail Gurule, Student Accounts</i> | |
| <i>Juanita Jose, Cashiering/Ck Distribution</i> | |
| <i>Alice Salcido, Accountant</i> | |
| <i>VP Business & Finance</i> | |
| Dual Credit Coordinator | |
| <i>Ambrosia Knighton</i> | 287-6620 |
| Education Resource Center | 287-6693 |
| Facilities | |
| <i>Dan Christmann</i> | 287-6673 |
| Financial Aid | |
| <i>Nicole Kormick, Processing</i> | 287-6621 |
| <i>Beth Armstead, Advising/awards</i> | 287-6628 |
| <i>Brian Johnson, Advising/awards</i> | 287-6629 |
| Human Resources | |
| <i>Janie Gutierrez</i> | 287-6625 |
| Information Technology (IT) | |
| <i>David Archibeque, IT Director</i> | 287-6664 |
| <i>Norm Ratliff, IT Technician</i> | 287-6665 |
| <i>Louis Bear Eagle, IT Technician</i> | 287-6663 |
| <i>Stephen Montano, Intern</i> | 287-6666 |
| Library Services | 287-6637 |
| <i>Cecilia Stafford</i> | |
| Small Business Development Center | 287-8221 |
| <i>Clemente Sanchez</i> | |
| Small Wonders Child Care Center | 287-3868 |
| <i>Jackie Hobbs</i> | |
| Student Services/Veteran’s Educational Benefits/Academic Advisers | |
| <i>Beth Armstead, VP Student Services</i> | 287-6628 |
| <i>Brian Johnson, Academic Advisor</i> | 287-6629 |
| <i>Sascha Larrabee, Transfer Advisor</i> | 287-6677 |
| Testing Center | |
| <i>TBA</i> | 287-6640 |

Spring Calendar

| | Spring Term | 8 Week I (MS1) | 8 Week II (MS2) |
|--|----------------------------|-------------------|--------------------|
| New Student Orientation – Mandatory- Weekly sessions are planned. See front office to pre-register. | | | |
| Campus Restriction (Students can only register at their primary campus) | November 12 – January 5 | | |
| Campus Restriction Lifted (Students can register for courses not offered at their primary campus) | January 6- 29 | | |
| Classes Begin | January 20 | January 20 | March 21 |
| Late Registration A late fee of \$25 will be assessed | January 20-29 | January 20-25 | March 21-24 |
| Last Day to Add a Course without instructors permission | January 21 | January 21 | March 22 |
| Martin Luther King Holiday (campus closed) | January 18 | January 18 | |
| Degree Application Deadline | January 29 | January 29 | January 29 |
| Certificate Application Deadline | March 4 | March 4 | March 4 |
| Last Day to Add a Course (Instructors Permission Required) | January 29 | January 25 | March 24 |
| Last Day to Drop a Course without a “W” (Census Date) *If a course is <i>dropped before</i> census date, course will be removed from class schedule. Students may drop themselves from courses through census date. After that, student must meet with an Academic Advisor. | February 5 | January 29 | March 31 |
| Late Degree Application Deadline | March 4 | March 4 | March 4 |
| Mid Semester Advising | March 4 | March 4 | March 4 |
| Last Day to Drop a Course with a “W” *A grade of “W” is assigned to all courses for which a student officially <i>withdraws from after</i> census date. | March 28 | February 17 | April 20 |
| Spring Holiday (campus closed) | March 25 | March 25 | March 25 |
| Spring Break (Spring Break for NMSU Las Cruces is March 14-18) | April 4-9 | April 4-9 | April 4-9 |
| Last Day to Withdraw from the University Students who do not officially withdraw from a course or from the University and fail to attend classes may receive failing grades and will be liable for all tuition and fees. Students may be required to repay a portion or all financial aid received | April 22 | March 1 | May 3 |
| Final Exam Week | May 9-13 | | |
| Last Day of Classes | May 13 | March 11 | May 13 |
| Commencement | May 13, 6pm | May 13, 6pm | May 13, 6pm |

Register Online using myNMSU

If you attended Summer 2015, Fall 2015, or Spring 2015 semesters, you are eligible to register. All others must apply for admission or readmission.

Registration Periods

- Early Registration: November 12 – January 19, 2016
- Late Registration begins January 20 – 25, 2016, a \$25 late registration fee applies per campus
- For late registration, students must obtain academic advising and register for classes at your dean's office/advising center or via the web.

Registration Process

1. Obtain academic advising as scheduled by your academic dean or department. Use the following classification sequence to determine your beginning registration date. Students who do not register on their designated date can register at any time in the remaining classification sequence and registration periods. The class schedule can be found online only
2. Use the following classification sequence to determine your beginning registration date. Students who do not register on their designated date can register at any time in the remaining classification sequence and registration periods. The class schedule can be found online only.
3. Register for courses through [MyNMSU](#) or at your academic college.

Registration Schedule by Classification

- Crimson Scholars (Seniors and Juniors) ----- Nov 12
- Crimson Scholars (Sophomores and Freshmen)----- Nov 13
- Disabled Students (students with disabilities must have approval from Services for Students with Disabilities Program)----- Nov 12
- Veteran Students----- Nov 12
- Graduate Students ----- Nov 16
- Senior Citizens ----- Nov 16
- Seniors (94 earned credits or more)----- Nov 16
- Juniors (62-93 earned credits)----- Nov 17
- Sophomores (28-61 earned credits) ----- Nov 18
- Freshmen (0-27 earned credits)----- Nov 19
- Non-Degree Students ----- Nov 20
- Readmitted Students (last attended prior to Summer 2015)----- Nov 20
- New Transfer Students ----- Nov 30
- New Students (Undergraduate and Graduate Students) ----- Nov 30

Registration Check List

- ✓ Submit the **Admission Application** if you are a new student or a returning student who has not enrolled in a class for one full year. Apply online at <https://prospective.nmsu.edu> plan on a 2 day turnaround processing period. Application fee is waived online; \$20 fee for paper application.
- ✓ Apply for **FAFSA** (Pell Grant, loans & work study) at www.fafsa.gov. Allow six weeks for processing. Meet with the financial aid advisor in Student Services for more information. Must apply once a year.
- ✓ All transcripts are required for Admissions for degree seeking students. Send for official transcripts of high school/GED scores and all colleges attended prior to enrolling at NMSU. **All transcripts must be at NMSU Grants by February 5, 2016 for Spring in order to be eligible as a "degree seeking" student for financial aid.**
- ✓ Take the computerized **College Placement Test (Compass)**. Obtain a test ticket at the Student Services Office. You will be tested for placement in English and Mathematics course work. **NOTE: It is not recommended that you enroll in General Education college classes, (classes with a course number ending in "G"), without being concurrently enrolled in or having completed ENGL 111G.**
- ✓ **Activate your my.nmsu.edu account.** NMSU email is the official mode of communication; contact the Information Technology Dept. if you have problems with your account. (505) 287-6666
- ✓ Attend the mandatory **New Student Orientation** if it is your first semester at NMSU Grants. See Student Services Office for dates. Weekly sessions will be held.
- ✓ **Register** for classes **EARLY**. Online courses and some general education courses fill up very quickly. Register at my.nmsu.edu. **If you have a "hold", you will need to see an advisor or the Business Office.**
- ✓ Make payment arrangements in the Business Office. **You risk being disenrolled if you have a prior balance & have not made arrangements to pay with the Business Office.**
- ✓ Obtain your Aggie ID in Student Services after Orientation
- ✓ Purchase books **before** the first day of class. Books can be purchased from MBS Direct at: <http://bookstore.mbsdirect.net> (see page 6)
- ✓ Always feel free to ask questions of the staff if you are unsure of anything. They are glad to help!

NMSU Spring Service Hours January 20 – May 13

Student Services

January 4 – January 15

Monday-Friday 8am-5pm

January 19 – May 13

Monday-Thursday 8am-5:30pm
Friday 8am – 5pm

Business Office (Student Accounts, Cashier's Office, Check Distribution)

January 2 - 15

Monday-Friday 8am-5pm

January 19 - January 22

Monday-Thursday 8am-5:30pm
Friday 8am – 5pm

January 25 - May 13

Monday – Friday 8am-5pm

Adult Education

Monday-Thursday 8am-9pm
Friday 8am-5pm

Student Success Center

Testing Hours

Monday-Thursday 9am-6pm
Friday 9am-2pm
Saturday Closed

Tutoring Hours

Monday-Thursday 10am-8pm
Friday 10am-4pm
Saturday Closed

Student Open Computer Lab

Monday-Thursday 9am-8pm
Friday 10am-4pm
Saturday Closed

Math Tutoring Lab

Room 124 Hours Posted

Library

January 4 – January 19

Monday-Friday 8am-5pm
Saturday Closed

January 20 – May 13

Monday-Thursday 8am-8pm
Friday 8am-5pm
Saturday Closed

MBS Direct – Virtual Bookstore

With MBS Direct you receive more than textbooks, you receive on-time delivery of the correct materials, money-savings programs and 24/7 customer service. MBS Direct delivers convenience and satisfaction.

Here's How to Order

1. MBS Direct is your official source for textbooks required by your school
 2. Order online through your school's Virtual Bookstore: <http://bookstore.mbsdirect.net> (Watch your cart for savings alerts.)
 3. Select the payment option that fits your needs
 4. Textbooks are shipped within 24 hours of order. E-book access codes and other electronic files are downloadable immediately when purchased by credit card.
- **New Books:** Pretty much hot off the press
 - **Used:** Gently used (we have one of the largest inventories in the industry; cost-savings are built in)
 - **Rental:** It goes back when the term is over
 - **eBook:** Our cross platform e-reader lets you view identical content on various devices (downloading saves shipping costs)
 - **eRental:** Limited license eBook that expires after a number of days



when you order from
January 11- 14, 2016



**ALL STUDENTS MUST
ACTIVATE AN NMSU ACCOUNT &
REGISTER ONLINE**

Tuition & Fees

Tuition

In-District

| | |
|----------------------------------|-----------|
| Per semester, 12-18 credits | \$ 948.00 |
| Per credit hour 1-12 and over 18 | \$ 79.00 |
| Per credit earned by examination | \$ 79.00 |

Out of District

| | |
|----------------------------------|-------------|
| Per semester, 12-18 credits | \$ 1,032.00 |
| Per credit hour 1-12 and over 18 | \$ 86.00 |
| Per credit earned by examination | \$ 86.00 |

Non-Resident

| | |
|----------------------------------|-------------|
| Per semester, 12-18 credits | \$ 1,968.00 |
| Per credit hour 1-12 and over 18 | \$ 164.00 |
| Per credit earned by examination | \$ 164.00 |

Lab Fees

| | |
|--|-----------------|
| ART 260, 285, 286 | \$50 |
| AUTO 112, 117, 119, 120, 125, 126, 127, 137, 221, 255, 295 | \$50 |
| BCT 105, 206, 255, 290..... | \$50 |
| BIOL 101, 110, 221L, 226..... | \$25 |
| CHEM 110..... | \$25 |
| ECED 220, 230..... | \$100 |
| ELT 160, 265..... | \$50 |
| ENGR 100 | \$50 |
| OEEM 101..... | \$10 |
| OEEM 115..... | \$85 |
| <i>(additional fees required, see course syllabus)</i> | |
| WELD 105, 115, 120, 130, 140, 211, 295 | \$50 |
| Web Based & Online Hybrid..... | \$10 per credit |
| Satellite Campus | \$10 per credit |

Accounts must be paid in full by:

May 13, 2016

Courses less than 5 weeks must be paid in full before classes start. Previous debts to NMSU must be paid in full before you register. Class attendance without tuition and/or fee payments makes you liable for semester charges and may cancel your enrollment.

Fees

| | |
|---|------------------------|
| Admission Application | \$ 20 |
| A one-time, non-refundable fee for first time admission to NMSU Grants | |
| Late Registration Fee..... | \$ 25 |
| Assessed the first day of classes | |
| Deferred Payment Fee | \$ 10 per month |
| Non-refundable payment plan fee will be assessed if not paid in full by February 15, 2016 | |
| <ul style="list-style-type: none"> • \$10 assessed to accounts if not paid in full by February 15, 2016 • \$10 assessed to accounts if not paid in full by March 15, 2016 • \$10 assessed to accounts if not paid in full by April 15, 2016 • \$10 assessed to accounts if not paid in full by May 15, 2016 | |
| Graduation Fee (Associate Candidate)..... | \$ 25 |
| Additional \$25 late fee after January 29, 2016 (see deadlines pg.4) | |
| Graduation Fee (Certificate Candidate) | \$ 10 |
| Due March 4, 2016 | |
| Web-Based, Online Hybrid & Satellite Campus | \$ 10 cr |

Senior Citizens

On a space-available basis seniors (65+) may enroll for up to 6 credits at \$5 per credit, non-degree seeking status. State law requires that senior citizens taking more than 6 credit hours be charged full rate for all credits based on in-district or out-of-district residency. **All other fees are charged at full rate (Distance Ed, Late Fee, Lab Fees and etc.).**

Option 1: Senior citizen students may register on the **first day of class** and be assessed the \$5.00 per credit hour tuition plus any applicable course fees.

Option 2: Senior citizen students may register **prior to the first day of class** and be assessed the full NMSU tuition (\$79 per credit) plus any applicable course fees.

Community Ed Option

The Community Education Option allows individuals to participate in a credit course similar to a typical noncredit community education course. Individuals do not have to apply for official admission and enrollment to NMSU Grants. No official college transcript is produced nor grade awarded. Individuals enrolled under the Community Education Option are required to follow university policy and are bound by the NMSU Grants Student Code of Conduct as are all other individuals authorized to use university services and facilities. Please call (505) 287-6678 for more information.

\$10

Withdrawal

A withdrawal form must be completed with Student Services to withdraw from a course or from the University. Not following this procedure may result in "F"s for all courses for which you are registered. Students are liable for all tuition and fees.



E-Billing

Electronic Billing (E-Bill) is the official method for delivery of billing statements to NMSU students. Billing statements are generated at the beginning of each month. At that time, an e-mail is sent to the student's official **nmsu.edu** e-mail address with instructions on how to view their bill within myNMSU.

TERMS AND CONDITIONS OF PROCESSING A COURSE REGISTRATION

By enrolling in classes at the New Mexico State University (NMSU), a student makes a financial commitment to pay the tuition and fee charges associated with that enrollment. The enrollment action constitutes a financial obligation between the student and NMSU and that all proceeds of this agreement will be used for educational purposes and constitute an educational loan pursuant to 11 U.S.C. § 523(a) (8).





The following terms and conditions are financial requirements of each student's education related to their registration for a term at New Mexico State University. The payment of tuition and fees is the obligation of the student. **By processing a course registration either via the Web or by submitting a course request card to an academic student registration area, a student acknowledges they have read and agree to the following terms and conditions:**

- Registration constitutes a financial agreement between you ("Student") and New Mexico State University ("NMSU"). Tuition, fees and other charges you incur, including but not limited to bookstore charges ("Charges"), shall be added to your student account and are considered a loan for educational benefit.
- Once you formally register for classes, you assume the responsibility for understanding New Mexico State University's official policies concerning schedule changes, satisfactory academic progress and the financial policies of the University as described in the 'New Mexico State University Undergraduate Catalog' or 'New Mexico State University Graduate Catalog' for the term of enrollment.
- Installment payment arrangements will be automatic with a non-refundable deferred payment fee for any Charges not paid in full within five (5) business days for Summer and ten (10) business days for Fall/Spring of the start of the term. For specific date, please check the 'Schedule of Classes' for the enrollment term.
- Charges may be prepaid at any time in whole or in part without premium or penalty.
- Charges left unpaid for prior terms will result in disenrollment from your current term courses unless payment arrangements are made with University Accounts Receivable prior to the disenrollment date. For that specific date, check the 'Schedule of Classes' for the enrollment term.
- In the event that you become delinquent in paying Charges or default in repaying Charges you will be liable for collection fees and any other costs incurred by New Mexico State to collect any monies due from you.
- Students withdrawing after the stated refund dates remain liable for full tuition and fee charges. Collection costs incurred in the event of delinquency shall be at the expense of the Student.
- NMSU accepts payment via student financial aid and third party sponsorship, but the responsibility for payment remains with the student. It is your responsibility to keep track of your account balance and any funding sources. If financial aid is not granted or if third party sponsors do not pay within a reasonable period, the student will be required to pay the full amount due.
- If New Mexico State University prevails in a lawsuit to collect on this financial obligation, Student will pay NMSU's court costs, collection agency costs, and attorney's fees in an amount the court finds to be reasonable.
- You consent to receive email notifications to your @nmsu.edu e-mail address of the availability of an E-Bill (Electronic Billing Statement) and consent to review billing statement information on NMSU Web Payment System.
- It is your responsibility to check your myNMSU email daily and maintain a current postal address to ensure receipt of all University correspondence.

SPRING REGISTRATION IS CONSIDERED COMPLETED ONCE A STUDENT HAS REGISTERED FOR A COURSE(S). IF A STUDENT CHOOSES NOT TO ATTEND NMSU FOR A TERM, SHE/HE MUST OFFICIALLY WITHDRAW FROM NMSU FOR THAT SPECIFIC TERM.

STUDENTS WITH A PREVIOUS SEMESTER BALANCE MAY HAVE THEIR COURSES FOR SPRING CANCELLED IF THEY HAVE NOT MADE PAYMENT ARRANGEMENTS FOR PREVIOUS TERMS DEBTS WITH THE BUSINESS OFFICE BY JANUARY 21, 2016 FOR SPRING 2016.

METHOD OF PAYMENT

| | | | |
|---|--|---|---|
| Mail  Mail all check payments to: New Mexico State University Grants 1500 N. Third Street Grants, NM 87020 | Telephone  Questions: (505)287-6682 Payments (505)287-6682 | In person  By visiting the cashier office located in Martinez Hall | Online  Pay online at: pay.nmsu.edu |
|---|--|---|---|

PLEASE NOTE THAT THE UNIVERSITY DOES NOT ACCEPT DEMAND DRAFTS

TUITION PAYMENT

You complete registration by paying tuition and fees as follows:

- 1) In full with cash, check, or credit card (Discover, MasterCard, VISA), or
- 2) By presenting verification of financial aid award, grant, scholarship, or program authorization to the Business Office.

PAYMENT PLAN

By enrolling in classes at the New Mexico State University (NMSU), a student makes a financial commitment to pay the tuition and fee charges associated with that enrollment. The enrollment action constitutes a financial obligation between the student and NMSU and that all proceeds of this agreement will be used for educational purposes and constitute an educational loan pursuant to 11 U.S.C. § 523(a) (8).

Students withdrawing after the stated refund dates remain liable for full tuition and fee charges. Collection costs incurred in the event of delinquency shall be at the expense of the borrower. Although the University accepts payment via student financial aid and third party sponsorship, the responsibility for payment remains with the student. If financial aid is not granted or if third party sponsors do not pay within a reasonable period, the student will be required to pay the full amount due.

All outstanding charges not paid in full by January 21, 2016 will automatically be placed on a payment plan and a payment plan fee of \$20.00 will be assessed. Outstanding charges will be divided into four equal payments for Spring.

REFUND OF TUITION AND FEES

Students officially withdrawing or dropping courses during the Spring 2016 semester are eligible to receive a refund as follows

16 Week (January 20 – May 13)

Through February 6 100%

8 Week I (January 20 – March 11)

Through January 29 100%

8 Week II (March 21 – May 13)

Through March 31 100%

REFUND PERCENTAGES ARE BASED UPON SEMESTER CHARGES, NOT AMOUNTS PAID. ALL REFUNDS ARE APPLIED TOWARD AMOUNTS OWED.

- The refund schedule on this page applies when courses are dropped and a tuition adjustment is necessary.
- Refunds for dropped credits will not be issued until after the last day to add a course.
- No refunds will be made on classes of less than five weeks duration.
- Part of Term refunds are based on class days completed.
- In cases of academic or disciplinary suspension, eligibility for refund will depend on the conditions of the suspension and will be entirely at the option of the University.
- Special Fees are refunded in full through the 100% refund period; thereafter, fees are non-refundable.
- Withdrawal refunds are calculated as of the date the withdrawal form is completed with the Registrar's Office.
- **Recipients of financial aid grants and loans who drop credits or withdraw may be required to return all or a portion of awarded Title IV funds.**

Students who are enrolled but choose not to attend must officially withdraw from the University. To officially withdraw, please go to the Registrar's Office.

Any funds remaining, after paying University expenses, will be available to students through the NMSU Grants Business Office. Prior term charges due to the University and non-institutional charges (i.e. Health Center charges, Degree fees, etc.) cannot be taken from a student's Financial Aid and/or Scholarship awards, therefore a balance may still be due to the University after a Financial Aid Refund is issued to a student.

Direct Deposit of Financial Aid to a student's checking account is available. To sign up for this service log on to my.nmsu.edu and click on the direct deposit link under student financial aid to securely input your bank account information.

Instructional Support Services

Adult Education (AE)

Adult Education (AE) programs offer adults the opportunity to begin and/or complete their education through the twelfth grade. They also provide a variety of educational programs that can help you meet your goals. An education will improve your opportunities for obtaining or retaining employment or going to college.

Included in the adult education instructional programs are literacy and GED (High School Equivalency Diploma). Student-support services, which promote educational success, include assessment, student orientation, self-paced studies, advising and referral services, and help from tutors on an individual and small-group basis. In addition, classes are offered each semester. There is no charge for AE Classes, services, or textbooks. Located in Room 120, Martinez Hall.

Computer Labs

NMSU Grants campus offers state-of-the-art computer hardware and software to students enrolled at NMSU. Six labs are located throughout the campus. Two labs are available for student use outside of class. An open lab in room 127 contains Gateway Pentium IV desktop computers with software applications used by several disciplines.

Information Technology Services

Room 122, Martinez Hall

Library Services

This is on the main floor, Martinez Hall. It hosts more than 23,000 titles in addition to an extensive audio and video collection. Computers provide online access to article databases. Computers are available for public use during operating hours.

Mathematics Lab

The Math Lab in Martinez Hall, room 124, provides all levels of assistance for developmental math through college algebra. The lab, staffed by a teaching technician, offers tutoring and testing services, and computer access.

NASNTI Grant

The U.S. Department of Education awarded a five-year Native American Serving Non-Tribal Institutions Grant (NASNTI) to New Mexico State University Grants Campus in October 2011 to expand access to educational opportunities for Cibola County, New Mexico residents. As part of the grant initiative, two priorities serve as focal points which include: 1) outreach to Native American, low-income, and at-risk clients in Cibola County with a myriad of entry points to access higher education, and 2) to enable more data-based decision making to improve services and strategic planning of institutional practices and services. Acoma Pueblo and Tohajiilee Navajo community outreach sites have been established to provide the following services: 1) Adult Education (GED) program, 2) Dual enrollment with high school students in the Cibola County Service area, and 3) college success and retention strategies including online and course offerings at each outreach center. Professional tutors in basic core requirements are available at the Student Success Center and we also have a Native American Student Program to provide extracurricular activities, support, and educational opportunities for all students. For more information, please contact the NASNTI office at (505) 287-6699

Online Canvas/Web-based Courses

- Any course with an online element (full or partial) will be at <http://learn.nmsu.edu>. Use the same username and password as you would for your my.nmsu.edu account.
- These courses require special skills, aptitude, and additional time commitment.
- You can obtain a list of technology skills and system requirements by going to: <http://distance.nmsu.edu> and selecting "prospective students"
- There is a \$35 course fee for NMSU Grants online courses. 100% online and hybrid have course fees.
- Log into learn.nmsu.edu to start your course on the 1st day of classes.

Student Success Center (SSC)

Located in Martinez Hall, room 125, this center offers a quiet study area, free one-on-one tutoring and test proctoring for students in most subjects, including writing, math, and many "G" courses. The SSC is also the college-testing center, administering the college placement test (COMPASS) to new students. SSC can also provide students with access to an online tutorial "Plato," where students may receive tutoring in math courses, writing and English courses, as well as develop their skills in a variety of courses (e.g. Biology, U.S. History, Native American Studies and Earth/Space Science etc.) Finally students interested in ameliorating their study skills, time management and test preparation may sign up for workshops at the SSC

Small Business Development

Small Business Development Center (SBDC)

The Small Business Development Center (SBDC) is located at 701 E. Roosevelt Ave., Grants, NM 87020, offers free specialized consulting and guidance for business owners, prospective owners, and managers. The SBDC is designed with the small business person in mind. Whether in business for some time or just starting out, the SBDC can help address issues and problems encountered by small business owners. As a member of the New Mexico Small Business Development Center Network, SBDC's experienced staff can help you:

- Explore business ownership opportunities in Cibola County & access a wealth of business resources
- Start a new business or make an established one more efficient and profitable.
- Improve your management skills.

Business Education

The SBDC offers individualized tutoring in accounting, marketing, and various aspects of management that can help you avoid costly mistakes. Special arrangements can be made for SBDC staff to come to businesses to discuss strategies. Seminars and workshops are available to improve business and management skills. For more information, contact **SBDC** at 287-8221 or at <http://grants.nmsu.edu/sbdc.html>

Campus Programs & Policies

Academic Advising

The Student Services Office is located in Martinez Hall, Room 5. Make an appointment or walk-in during office hours, to see an adviser prior to registration to review your degree plan.

Campus SaVE Act

NMSU does not tolerate any sexual violence to include partner violence which can be defined as any physical, sexual, or psychological harm against an individual by a current or former partner or spouse of the individual. Such sexual violence covers domestic violence, dating violence, or stalking. The Campus SaVE Act compliments and is a companion to Title IX and assists with the response to and prevention of sexual violence in higher education. The Act provides a framework for educational institutions to address incidents of sexual violence occurring on-campus, on public property within and adjacent to campus, and at non-campus properties like off-campus student organization housing, campus sponsored events and remote classrooms.

All new students, including Adult Basic Education students, Dual Credit high school students, and non-degree students must participate in training on the Campus SaVE Act. All employees will receive the President's policy on an annual basis. Failure to comply with the training will result in disenrollment from courses or the inability to register for courses and participate on the NMSU campuses. Training will be provided for students at the mandatory New Student Orientation, as well as an online training. (at the time of print, the online training is being developed)

The complete text of this policy will be maintained on the OIE website: <http://eeo.nmsu.edu/>

STAR Degree Audit

The Student Academic Requirements (STAR) degree audit program is a web-based service that allows NMSU students to run online degree checks on academic programs. Access your STAR audit at myNMSU.edu/StudentRecords.

Students with Disabilities

In compliance with the Americans with Disabilities Act (ADA), students with disabilities who need special services in the classroom or have difficulty gaining access to any university building, should contact Beth Armstead, Vice President for Student Services at 287-NMSU (6678). Students must self-disclose their need for accommodations.

Student RIGHT-TO-KNOW and Campus Security Act

NMSU is required to provide to you information in accordance with Federal Regulation 34 CFR Part 86 of the Department of Education and the Student Right-to-Know and Campus Security Act. You can access the information by going to www.nmsupolice.com, and then selecting the "Annual Reports" link on the left menu

Student Code of Conduct

The Vice President for Student Affairs (NMSU Las Cruces) establishes and enforces standards of conduct for all NMSU students. The Vice President for Student Services, Beth Armstead, enforces conduct for the Grants campus. Obtain your copy of the Student Code of Conduct in Student Services or online at grants.nmsu.edu.

Course Transfer

The institution to which you transfer determines transferability of courses taken at NMSU Grants. Usually, general education courses (marked "G") are accepted by other institutions when these courses apply to a degree program at the school. Technical, vocational, or special courses (OE/BOT) may be applied to Baccalaureate degrees only upon petition to and approval from the institution to which you transfer. For information, contact an adviser or review a copy of the latest NMSU Grants catalog and consult the institution you may plan to transfer to.

Children on Campus

Children should not be left unattended or be permitted to disrupt classes. Small Wonders Child Care Center, on the NMSU Grants campus, offers childcare to students, faculty, and staff for children, ages 6 weeks to 12 years, for an established fee. Contact Small Wonders Child Care Center, 287-3868. Apply early as there is often a waiting list. The Center does not offer "drop in" care.

NMSU Cibola County Extension Service

Chase Elkins, Program Director
Barbara Baca, Administrative Secretary
Gwen Jaramillo, ICAN Educator
Jeanne Naramore, ICAN Educator

- **Just Be It: Nutrition and Fitness Programs for Youth K-5th grade/Organ Wise Guys**
- **4-H Youth Ballet**
- **ICAN – Nutrition classes for Adults and Kids**
- **Parenting Classes**
- **4-H Clubs**

For more information regarding these services contact the office at:

551 Washington Ave, Grants, NM 87020. Phone: 505-287-9266, Email: Cibola@nmsu.edu, Online: cibolaextension.nmsu.edu

ADMISSIONS

All new, readmitted, and transfer students must apply for admissions prior to registration. Students will be admitted as either degree seeking or non-degree seeking. All applicants must be either high school graduates or must have successfully passed the GED exam. Transfer students must verify that they are eligible to return to any previously attended colleges. Admission applications are available from the NMSU Grants Student Services Office or by applying online.

To apply for admissions or readmission:

- 1- Complete an application for admissions. If you are applying for financial aid or veterans benefits, you must apply as degree seeking
- 2- Submit the completed application to NMSU Grants, 1500 N. Third Street, Grants, NM 87020. If you have never taken classes at NMSU before, you must include with your application a one-time, non-refundable \$20 admission fee.
- 3- Request that your GED scores or transcripts from former high schools and/or colleges be sent directly to NMSU Grants.
- 4- An Admission Status Letter will be provided to you upon request. **Note:** Student in non-degree admission status is not eligible for Financial Aid or Veterans Benefits.

Changing Admissions or Enrollment Status

The deadline for changing admission status from non-degree to degree seeking is census date. After this date, students will remain in the non-degree seeking status for the term. The deadline for changing enrollment status from credit to audit or graded to S/U is census date.

Social Security Numbers/NMSU Aggie ID in Student Records

Social security numbers are collected for prospective and current students for administrative coordination and record identification purposes only. Although procedures have been established by the Registrar for assignment or an alternative number upon request, students who wish to be employed on campus or to receive financial aid are required by law to provide their social security number for administrative use. Further, the university is mandated by federal tax regulations to provide tuition and fee payment information to the student and the Internal Revenue Service, so that applicable educational tax credits may be computed. The social security number will be necessary to submit this tax reporting. In the event that the university does not have the social security number for a student, a reasonable effort will be made to obtain this information. The social security number is a confidential record and is maintained as such by the university in accordance with the Family Educational Rights and Privacy Act. A NMSU Aggie ID number is assigned to each admitted and enrolled student and will be used as the primary identifier when enrolling for classes through Student Services, for obtaining printed class schedules, and for all Business Office transactions. The Aggie ID number can be found after logging into your MyNMSU account.

FINANCIAL AID/SCHOLARSHIPS

Title IV Code is 008854

You must register for classes prior to the date posted in the Financial Aid Office to be eligible for aid. Students will be billed for 100% of aid they received for classes they never attended.

Financial Aid and/or Scholarship Awards will be automatically applied to your NMSU account through the University Accounts Receivable Office. Any funds remaining after paying University expenses will be available to you through direct deposit or check. You may sign up for direct deposit through my.nmsu.edu. If you do not choose direct deposit, you may pick up your check at the NMSU Grants Business Office.

Financial Aid cannot be disbursed until your Financial Aid file is complete. You can review the status of your financial aid through your my.nmsu.edu and/or by contacting the NMSU Grants Financial Aid Office. To avoid delays, you should complete your financial aid files accurately and early. If you have not been awarded financial aid, you must make payment arrangements at the NMSU-Grants Business Office. Grant and Loan financial aid for the first and second 8-week sessions will be paid at the beginning of the 16-week semester. The cut-off date to add classes for financial aid purposes will be posted at the NMSU Grants Financial Aid counter. Financial Aid may not pay for the courses added after the cut-off date. **You will NOT be automatically withdrawn from the University if you do not attend classes. You must officially withdraw at the NMSU Grants Admissions and Records Office.**

To receive financial aid, you must be degree-seeking with the NMSU Grants Admissions and Records Office.

You must notify the NMSU Grants Financial Aid Office of any and all additional resources: scholarships, tuition waivers, stipends, WIA, DVR, state or federal awards, and others. All financial aid offers are subject to revision due to changes in policy, law, regulations, or errors in funding. You are responsible to repay excess funds disbursed due to any of these reasons.

You must be enrolled in at least 6 credit hours to receive a loan award. First time borrowers must complete an online Loan Entrance Counseling and Master Promissory Note at: <https://studentloans.gov> prior to loan disbursement. **Disbursement for first-time Freshmen loan borrowers will be 30 days after the semester begins.** Satisfactory academic progress will be monitored to determine eligibility for Financial Aid. Satisfactory progress includes:

- Maintaining a cumulative grade point average of 2.0 for undergraduates,
- Satisfactory completion of at least 70% of credits hours attempted, and
- A maximum time frame to complete a degree (usually 90 attempted hours for an associate degree)

VA Benefits - If you plan to use VA benefits, you must have your class(es) approved by an advisor prior to registration. All new students should apply online for Educational Benefits at gibill.va.gov. Chapter 31 & 33 participants are not responsible for paying tuition. All other VA Chapter participants are responsible for paying their tuition per the Payment Plan Schedule.

NMSU Distance Education

NMSU Distance Education provides comprehensive distance learning opportunities to meet diverse educational and professional needs anytime, anywhere. As New Mexico's land-grant institution, NMSU has a university-wide mission to expand the capacity of extension, outreach, and distance education to communities across the state. NMSU's distance education degree programs are designed to serve students who may not be able to pursue an education through traditional means. NMSU offers Bachelor degree completion programs, Masters and Doctorate programs, and a number of Certificate and Licensure options.

Technology-Based Programs are delivered using Canvas and ITV (Interactive Television), and other learning technologies.

Cost for upper division courses (300 & 400 level): Current Las Cruces campus tuition and fees plus \$35 distance education fee per credit.

If you are interested in Teacher Education, Nursing, Criminal Justice, Business, Sociology, Information Communication Technology, Hotel Restaurant & Tourism Management, these degrees may be available at the Bachelor, Master and Doctoral levels. For further information, contact Distance Education toll-free 1-800-821-1574 or (575) 646-4692, email: distance@nmsu.edu, or on-site in Milton Hall room 185 during regular business hours. Distance Education Website is <http://distance.nmsu.edu>.

Bachelor of Science in Nursing (BSN)

This is a unique program. The nursing coursework will be conducted via live instructional television (ITV) from NMSU – Las Cruces. Students will participate actively in the lectures and coursework conducted in Las Cruces while sitting in a classroom on the Grants Campus.

The clinical and skills portion of the program will occur at the Grants Campus and be led by an NMSU nursing instructor.

Requirements: Maintain a minimum prerequisite 2.75 GPA on all required courses.

Costs: Current Las Cruces campus tuition and fees plus a \$35 per credit hour distance education fee.

To apply: Please call (575) 646-3812 or email at nursing@nmsu.edu for the most current admissions requirements.

For more information you may speak with an NMSU Grants Advisor regarding program requirements.

Applications are accepted in early February for fall admissions.

Common Drugs and Symptoms of Abuse

| TYPE OF DRUG | DRUG NAMES | STREET NAMES | METHOD OF USE | SYMPTOMS OF USE | HAZARDS OF USE |
|---|--|---|---|---|---|
| MARIJUANA/ HASHISH, HASHISH OIL | Marinol, THC | Pot, Grass, Reefer, Weed, Sinsemilla, Joint, J, Hash Oil, Columbian, Acapulco Gold, Thai Sticks, Sole | Smoked, orally ingested as in brownies. | Sweet burnt odor on clothing or breath; euphoria, relaxed inhibitions, increased appetite, disorientation, possible paranoia depending on strength of THC content | Impaired memory, perception; interference with psychological maturation; lung, heart, reproduction, and immune system damage |
| ALCOHOL | Beer, Wine, Liquor, also in food products of many types and medicinal products averaging 25% alcohol | Booze, Hooch, Juice, Brewski's | Oral consumption | Impaired psychomotor coordination; alcoholics feel more euphoria than non-alcoholics; impaired judgement; genetic risk determines other responses to drug | High consumption leads to pathologic organ changes. Death from overdose possible; high accident risk when driving a car; addiction for those at risk |
| STIMULANTS (drugs that stimulate the central nervous system) | Coke, Flake, Snow, Crack Amphetamine, Siphetamine, Desoxyn, Dexedrine, Ritalin, Methamphetamine, Khat, Sanorex, Tenuate, Isonatin, Misanor, Methedrine, etc. | Cocaine: Crack, Snow, ICE, Flake PILLS: Speed, Uppers, Pep Pills, Bennies, Dexies, Meth, Crystal, Black Beauties | Cocaine: Snorted, Smoked, or sometimes injected. PILLS: Oral consumption; make be crushed up, impurities removed by solvent or water and injected in a vein. | Euphoria, excitability, increased alertness, increased blood pressure and pulse rate, insomnia, loss of appetite Restlessness, intense short term high | Agitation, death from overdose, depression with suicidal thinking, lung damage, nasal passage damage, risk of poly-drug use to tranquilizers to blunt stimulant effects, heart damage |
| DEPRESSANTS (drugs that depress the central nervous system) | Barbiturates: amytal, flornal, nembutal, secenal, phenobarbital, pentobarbital, etc. Benzodiazepines: Valium, Xanax, Librium, Ativan, Dalmane, Serax, Restoril, Tranxene, etc. Other: Equanil, Miltown, Placidyl, Methaqualone (no longer legal made) | PILLS: Barbs, Downers, Yellow Jackets, Red Devils, Blue Devils Methaqualone: Quaaludes, Ludes, Soppers | PILLS: Used orally, but may be crushed, dissolved, and then injected. | Slurred speech, disorientation, confusion, impaired judgement, constricted pupils, drunken behavior similar to alcohol without the odor | Death from overdose and rapid increase in tolerance to barbiturates; shallow respiration, insomnia, tremors, delirium, convulsions, anxiety with withdrawal |
| NARCOTICS & ANALOGS (related drugs produced in labs) | Heroin, Morphine, Codeine, Hydrocodone, Oxycodone, Dilaudid, Methadone, Fentanyl (used for anesthesia), DayCondin, Other narcotics for pain Percodan, Demerol, Percocet, Darvon, Talwin, etc. | Heroin: H, Horse, Smack, Junk, Dreamer Hill Billy Heroin (Oxycodone) Codeine: School boy | PILLS: Used orally, but may be crushed, dissolved, and then injected. Heroin: snorted, smoked, injected, subcutaneous "skin popping". | Euphoria, respiratory depression, constricted pupils, nausea, rowiness, lethargy, needle marks possible on any part of body for regular junkies; slurred speech w/overdose, impaired judgement, | Death from overdose, diseases from needle sharing, clammy skin, coma, slow and shallow breathing, high risk of polydrug dependence with stimulants to enhance or mitigate effects of primary drug |
| HALLUCINOGENS ANALOGS HALLUCINOGEN-TYPE DRUGS ("Club Drugs") WITH SEDATIVE EFFECTS | LSD, Mescaline and Peyote, Meth- Amphetamine and variants, GHB, Ketamine, Phencyclidine (PCP) and analogs; Psilocybin, etc. | LSD: Acid, Microdot, Window Pane, blotter acid Peyote: buttons, Cactus, mescal PCP: Love Boat, Shermans, Angel Dust, Woodies Methamphetamine: Crystal, Ecstasy, ICE, MDA, MDMA, DMA GHB: Grievous Bodily Harm Mushrooms: Shrooms | Orally; Some may be injected like crystal methamphetamine; Other hallucinogens may be smoked or made into a tea (peyote, mescaline, etc.) | Blurred speech, blurred vision, confusion, distortion of time and space, sensory distortions, illusions, hallucinations, paranoia, dilated pupils, mood swings, possible aggression, agitation. | Anxiety, depression, impaired memory, flashbacks at any time, emotional and psychotic reactions, death from overdose, organic brain damage from PCP use |
| INHALANTS | All volatile liquids and gases | Gasoline, glue, paint thinner, nitrous oxide, nitrite (amyl, butyl), laughing gas, poppers, whippets (whipped cream charges) | | Poor motor coordination, dizziness, impaired vision, violence | High risk of sudden death, brain & liver damage |

Student Confidentiality Form

The following information has been designated as Directory Information, which is subject to release to the public under the Buckley Amendment (PL 93-380), "The Family Educational Rights and Privacy Act of 1974":

Student's name, address, e-mail address, telephone listing, date and place of birth, classification, major field of study, participation in officially recognized activities and sports, weight and height of members of athletic teams, dates of attendance, degrees and awards received, and the most recent previous educational agency or institution attended by the student.

Other information regarding disclosure of student data is posted at the Student Services office in compliance with the Act.

If you are a **currently enrolled** student and **object** to the release of this information to all publics, you must return this form to the Student Services office in person.

| | | | |
|-----------|-------|--------|----------|
| Last Name | First | Middle | Aggie ID |
| Signature | | | Date |

No Release form for Electronic, Print and Video

Occasionally photographs, videos, or other audio or visual images of students may be used by New Mexico State University Grants for course materials, the NMSU Grants website, dissemination in brochures and other promotional materials such as our catalog, schedule of classes, student handbook, promotional flyers or other public presentation documents.

Furthermore, such photographs, film, video recording, or other audio or visual images, may be used free and clear of any claim whatsoever on my part.

Complete this form if you are **currently enrolled** student and **object** to photos of you at NMSU activities being published.

| | | |
|----------------------------|-----------|------|
| Student (please print) | Aggie ID | |
| Signature | Date | |
| Parent Name (please print) | Signature | Date |

Spring 2016

January 20 – May 13

| NOTE | CRN | COURSE | PTRM | CR | COURSE TITLE | TIME | DAY | PLACE | INSTRUCTOR |
|---------------------------------------|-------|-----------|------|-------|-------------------------------------|------------------------|--------------|----------------------|------------------------------------|
| ACCT-ACCOUNTING | | | | | | | | | |
| | 30280 | ACCT 222 | G01 | 3 | MANAGEMENT ACCOUNTING | | TBA | ONLINE WEB | ORTIZ, GERALDINE |
| AHS-ALLIED HEALTH SCIENCE | | | | | | | | | |
| | 28715 | AHS 120 | G01 | 3 | MEDICAL TERMINOLOGY | | TBA | ONLINE WEB | GALLAGHER, NEAL |
| | 28716 | AHS 153 | G01 | 4 | INTRO ANTMY/PHYSLGY I | | TBA | ONLINE WEB | GALLAGHER, NEAL |
| ART-ART | | | | | | | | | |
| | 32745 | ART 101G | G01 | 3 | ORIENTATION IN ART | | TBA | | ROMERO, ALFRED |
| | 32747 | ART 260 | G01 | 3 | INTRO TO PAINTING | 0930-1230 | TR | GRGN 311 | ROMERO, ALFRED |
| | 30647 | ART 285 | G01 | 3 | INTRO METALS | 1900-2045 | TR | GRGQ 050 | ESTEVAN, ROBERT |
| | 32934 | ART 286 | G01 | 3 | STAINED GLASS | 0900-1500 | S | GRGN 306 | ALLEN-WEBB, MARY |
| ASTR-ASTRONOMY | | | | | | | | | |
| | 28897 | ASTR 110G | G01 | 4 | INTRDN TO ASTRONOMY | 1715-2045 | F | GRGQ 101 | O KEEFE, WILLIAM POUNDS, THOMAS |
| AUTO-AUTOMOTIVE TECHNOLOGY | | | | | | | | | |
| | 29040 | AUTO 112 | G01 | 5 | BASIC GASOLINE ENGINE LABORATORY | 0810-0840 0845-1000 | MTWR MTWR | GRGQ 052 GRGQ 052 | GARCIA, PAUL |
| | 29041 | AUTO 117 | G01 | 5 | ELT ANLYS TUNE-UP GAS LABORATORY | 1020-1050 1100-1205 | MTWR MTWR | GRGQ 052 GRGQ 052 | GARCIA, PAUL |
| | 29043 | AUTO 120 | G01 | 4 | ELECTRICAL SYSTEMS LABORATORY | 1300-1420 1430-1605 | MW MW | GRGQ 052 GRGQ 052 | GARCIA, PAUL |
| | 30789 | AUTO 137 | G01 | 4 | FUEL SYSTM/EMSN CNTRL LABORATORY | 1300-1420 1430-1605 | TR TR | GRGQ 052 GRGQ 052 | GARCIA, PAUL |
| BCT-BUILDING CONSTRUCTION TECH | | | | | | | | | |
| | 29021 | BCT 105 | G01 | 3 | WOODWORKING SKILLS II | 1730-2000 | TR | GRGN 302 | PREWETT, EARL |
| | 32755 | BCT 206 | G01 | 3 | ADVANCED CABINET MAKING | 0900-1200 | TR | GRGN 302 | PREWETT, EARL |
| | 29024 | BCT 255 | G01 | 3 | SP TOP: FURNITURE MKG | 0900-1400 | S | GRGN 302 | PREWITT, EARL |
| | 32756 | BCT 290 | G01 | 1 | SPCL PRBLM IN BLDG TECH | 1300-1400 | TR | GRGN 302 | PREWETT, EARL |
| BIOL-BIOLOGY | | | | | | | | | |
| | 34041 | BIOL 110G | G01 | 4 | CNTMPRY PRBLM IN BIOL LABORATORY | 1300-1600 | T | ONLINE GRGQ 110 | BASSEN, RACHELLE |
| | 28898 | BIOL 221 | G01 | 3 | INTRO TO MICROBIOLOGY | 1600-1715 | MW | GRGQ 110 | BASSEN, RACHELLE |
| | 28899 | BIOL 221L | G01 | 1 | INTRO MICROBIOL LAB LABORATORY | 1730-1900 | MW | GRGQ 110 | CONNELL, MARIE |
| | 28901 | BIOL 226 | G01 | 4 | HUMAN ANATOMY/PHYS II LABORATORY | 1130-1245 1000-1300 | MW R | GRGQ 110 GRGQ 110 | BASSEN, RACHELLE |
| | 33157 | BIOL 250 | G01 | MS2 1 | SPEC TOPS: TAKE A HIKE | | TBA | | BASSEN, RACHELLE |
| BLAW-BUSINESS LAW | | | | | | | | | |
| | 32766 | BLAW 230 | G01 | 3 | BUSINESS LAW | | TBA | ONLINE WEB | STOKOWSKI, RACHEL |
| BUSA-BUSINESS ADMINISTRATION | | | | | | | | | |
| | 33805 | BUSA 111 | G01 | 3 | BUS IN GLOBAL SOCIETY | | TBA | | TBA |
| C EP-COUNSELING & EDUC PSY | | | | | | | | | |
| | 22000 | C EP 110G | G01 | 3 | HUMAN GROWTH/BEHAVIOR | | TBA | ONLINE WEB | ADAMS, KUMEN |
| | 33249 | C EP 110G | G02 | 3 | HUMAN GROWTH/BEHAVIOR | 1730-2000 | T | | JOHNSON, BRIAN |
| | 34064 | C EP 210 | G01 | 3 | EDUCATIONAL PSY | | TBA | ONLINE WEB | ADAMS, KUMEN |
| | 34065 | C EP 215 | G01 | 3 | THE PRESCHOOL CHILD | | TBA | ONLINE WEB | O'CONNOR, KATHLEEN |
| | 30849 | C EP 240 | G01 | 3 | ADOLESCENCE-SCH STNG | | TBA | ONLINE WEB | ADAMS, KUMEN |

Classes can be added, cancelled and changed throughout the semester

Log in to [myNMSU](#) to view current changes

| NOTE | CRN | COURSE | PTRM | CR | COURSE TITLE | TIME | DAY | PLACE | INSTRUCTOR |
|---------------------------------------|-------|-----------|------|-------|-------------------------------------|-----------|------|------------|----------------------|
| C J-CRIMINAL JUSTICE | | | | | | | | | |
| | 22720 | C J 101G | G01 | 3 | INTRO CRIMINAL JUSTICE | | TBA | ONLINE WEB | STONEKING, MEGAN |
| | 22727 | C J 199 | G01 | 3 | SP TOP: GANGS AND CRIME | | TBA | | STONEKING, MEGAN |
| | 22732 | C J 205 | G01 | 3 | CRIMINAL LAW I | | TBA | | STONEKING, MEGAN |
| | 32772 | C J 210 | G01 | 3 | AMER LAW ENFRMNT SYTM | | TBA | | TOYA, ROSHANNA |
| | 33933 | C J 230 | G01 | 3 | INTRN TO CORRECTIONS | | TBA | | TOYA, ROSHANNA |
| | 22860 | C J 250 | G01 | 3 | COURTS/CRMNL JUST SYT | | TBA | ONLINE WEB | TOYA, ROSHANNA |
| C S-COMPUTER SCIENCE | | | | | | | | | |
| | 28649 | C S 110 | G01 | 3 | COMPUTER LITERACY | 1600-1715 | MW | GRGN 307 | GALLEGOS, GABRIEL |
| | 28651 | C S 110 | G03 | 3 | COMPUTER LITERACY | | TBA | ONLINE WEB | GALLEGOS, GABRIEL |
| | 28858 | C S 110 | G04 | 3 | COMPUTER LITERACY | | TBA | ONLINE WEB | GNODLE, JERMANE |
| | 31732 | C S 110 | G05 | MS2 3 | COMPUTER LITERACY | | TBA | | GNODLE, JERMANE |
| | 32762 | C S 110 | G06 | MS1 3 | COMPUTER LITERACY | | TBA | | HOGUE, NENDERLE |
| | 33798 | C S 187 | G01 | 3 | JAVA PROGRAMMING | | TBA | | HENRY, KAREN |
| CCDE-DEVELOPMENTAL ENGLISH | | | | | | | | | |
| | 32935 | CCDE 110N | G01 | 4 | GENERAL COMPOSITION | 1000-1140 | MW | GRGQ 123 | BURKE, GAIL |
| | 28722 | CCDE 110N | G02 | 4 | GENERAL COMPOSITION | 1400-1540 | MW | GRGN 309 | ROMERO, ALFRED |
| | 28724 | CCDE 110N | G03 | 4 | GENERAL COMPOSITION | 1820-2000 | TR | GRGQ 101 | HUMPHREYS, ELIZABETH |
| CCDM-DEVELOPMENTAL MATHEMATICS | | | | | | | | | |
| | 28874 | CCDM 100N | G01 | 4 | MATH PREP COLLEGE | 1000-1140 | TR | GRGQ 123 | PREWETT, JANET |
| | 28876 | CCDM 103N | G01 | MS1 4 | PREALGEBRA (<i>Lecture</i>) | 1000-1210 | MTWR | GRGQ 124 | LYONS, CONNIE |
| | 28877 | CCDM 103N | G02 | 4 | PREALGEBRA (<i>Self-Paced</i>) | 1300-1510 | MW | GRGQ 124 | CHAVEZ-TOIVANEN, M |
| | 28878 | CCDM 103N | G03 | 4 | PREALGEBRA (<i>Self-Paced</i>) | 1900-2110 | TR | GRGQ 124 | LOWTHER, MARK |
| | 28879 | CCDM 103N | G04 | 4 | PREALGEBRA (<i>Self-Paced</i>) | 1730-1940 | MW | GRGQ 124 | LEOPANDO, IMELDA |
| | 28883 | CCDM 114N | G01 | MS2 4 | ALGEBRA SKILLS(<i>Lecture</i>) | 1000-1210 | MTWR | GRGQ 124 | LYONS, CONNIE |
| | 28884 | CCDM 114N | G02 | 4 | ALGEBRA SKILLS(<i>Self-Paced</i>) | 1300-1510 | MW | GRGQ 124 | CHAVEZ-TOIVANEN, M |
| | 28885 | CCDM 114N | G03 | 4 | ALGEBRA SKILLS(<i>Self-Paced</i>) | 1900-2110 | TR | GRGQ 124 | LOWTHER, MARK |
| | 28886 | CCDM 114N | G04 | 4 | ALGEBRA SKILLS(<i>Self-Paced</i>) | 1730-1940 | MW | GRGQ 124 | LEOPANDO, IMELDA |
| CHEM-CHEMISTRY | | | | | | | | | |
| | 28903 | CHEM 110G | G01 | 4 | PRINC & APPL OF CHEM LABORATORY | 1000-1115 | MW | GRGQ 111 | STOKOWSKI, DAVID |
| | 34044 | CHEM 110G | G02 | 4 | PRINC & APPL OF CHEM | 1000-1300 | T | GRGQ 110 | STOKOWSKI, DAVID |
| | | | | | | | TBA | ONLINE WEB | STOKOWSKI, DAVID |
| CMT-CREATIVE MEDIA TECHNOLOGY | | | | | | | | | |
| | 30152 | CMT 120 | G01 | MS2 3 | INTRO TO CRTVE MEDIA | | TBA | ONLINE WEB | BURDS, CATHERINE |
| | 32713 | CMT 130 | G01 | 3 | WEB DESIGN I | | TBA | | HOGUE, NENDERLE |
| | 32760 | CMT 135 | G01 | 3 | INTRO TO 3D COMP ANIM | 1055-1145 | TR | GRGQ 121 | GUTIERREZ, RICHARD |
| | 33984 | CMT 150 | G01 | 3 | 2D ANIMATION | 1000-1145 | TR | GRGQ 121 | GUTIERREZ, RICHARD |
| | 32359 | CMT 151 | G01 | 3 | EVOLUTION OF ELECT GAMES | | TBA | | HAMMON-GARCIA, DIA |
| | 32906 | CMT 160 | G01 | 3 | MODELING AND ANIMATION | 1700-1815 | MW | GRGN 301 | MORRISON, JONATHAN |
| | 33796 | CMT 180 | G01 | MS1 3 | DESIGN PRINCIPLES | | TBA | | CUCCIARDI, LARA |
| | 32361 | CMT 200 | G01 | 3 | CRITICAL GAME STUDIES | | TBA | | CUCCIARDI, LARA |
| | 33797 | CMT 252 | G01 | 3 | GAME TOOLS TECHNIQUES | 1530-1645 | MW | GRGN 301 | CHURCH, JOHN |

NOTE: Unreal Engine

| NOTE | CRN | COURSE | PTRM | CR | COURSE TITLE | TIME | DAY | PLACE | INSTRUCTOR |
|---------------------------------------|--|-----------|------|-------|-------------------------|-----------|-----|------------|--------------------|
| COLL-COLLEGE | | | | | | | | | |
| | 29639 | COLL 101 | G01 | 3 | COLLEGE/LIFE SUCCESS | | TBA | ONLINE WEB | BROWN, JUANA |
| | 29640 | COLL 101 | G02 | MS2 3 | COLLEGE/LIFE SUCCESS | 1400-1630 | TR | GRGQ 123 | TBA |
| | 29641 | COLL 101 | G03 | 3 | COLLEGE/LIFE SUCCESS | 1715-1830 | MW | GRGQ 102 | PREWETT, CAROL |
| | 30672 | COLL 101 | G04 | 3 | COLLEGE/LIFE SUCCESS | | TBA | ONLINE WEB | ROMERO, ALFRED |
| | 30675 | COLL 120 | G01 | 1 | CAREER EXPLORATION | | TBA | | BROWN, JUANA |
| COMM-COMMUNICATION | | | | | | | | | |
| | 28737 | COMM 253G | G01 | 3 | PUBLIC SPEAKING | 1600-1830 | W | GRGQ 105 | BURKE, GAIL |
| | 28739 | COMM 265G | G01 | 3 | PRNCPLS-HUMAN CMNCTN | 0830-0945 | TR | GRGQ 101 | SAVACHECK, MARY |
| | 32795 | COMM 265G | G02 | 3 | PRNCPLS-HUMAN CMNCTN | 1400-1515 | TR | GRGQ 102 | SAVACHECK, MARY |
| DANC-DANCE | | | | | | | | | |
| | 33999 | DANC 122 | G01 | MS2 1 | INTRO TO LATIN SOCIAL | 1730-1930 | T | GRGM 220 | ROMERO, ALFRED |
| DRFT-DRAFTING | | | | | | | | | |
| | 22520 | DRFT 114 | G01 | 3 | INTRO TO SOLID MODELING | 1000-1145 | MW | GRGQ 121 | GUTIERREZ, RICHARD |
| | 33980 | DRFT 135 | G01 | 3 | ELECTRONICS DRAFTING | 1000-1145 | MW | GRGQ 121 | GUTIERREZ, RICHARD |
| | 33982 | DRFT 143 | G01 | 3 | CIVIL DRAFTING FUND | 1500-1645 | TR | GRGQ 121 | KEENE, MILFORD |
| | 33981 | DRFT 180 | G01 | 3 | RESIDENTIAL DRFT | 1000-1145 | MW | GRGQ 121 | GUTIERREZ, RICHARD |
| | 32758 | DRFT 276 | G01 | 3 | COMP RENDER/ANIMATION | 1000-1145 | TR | GRGQ 122 | GUTIERREZ, RICHARD |
| E S-ENVIRONMENTAL SCIENCE | | | | | | | | | |
| | 34045 | E S 110G | G01 | 4 | INTRO ENVIRON SCI | | TBA | ONLINE WEB | WALSH, SHARON |
| ECED-EARLY CHILDHOOD EDUCATION | | | | | | | | | |
| | 28868 | ECED 115 | G01 | 3 | CHLD GWTH, DEV & LRNG | | TBA | | MARTINEZ, HEATHER |
| | 28869 | ECED 125 | G01 | MS1 2 | HEALTH, SAFETY & NUTR | | TBA | ONLINE WEB | WINFREY, KRISTIN |
| | 29888 | ECED 135 | G01 | 3 | FAMLY & COMNTY COLLAB | | TBA | ONLINE WEB | ZAMORA, J'LANE |
| | 31097 | ECED 225 | G01 | 3 | CURR DEV & IMPL | | TBA | | O'CONNOR, KATHLEEN |
| NOTE: | Instructors Signature required | | | | | | | | |
| | 22016 | ECED 230 | G01 | 2 | ECED PRACTICUM II | | TBA | ONLINE WEB | O'CONNOR, KATHLEEN |
| NOTE: | \$100 LAB FEE MUST TAKE WITH ECED 225, Instructors Signature required | | | | | | | | |
| | 30851 | ECED 230 | G02 | 2 | ECED PRACTICUM II | | TBA | | ZAMORA, J'LANE |
| NOTE: | \$100 Lab Fee. Must take with ECED 225, Instructors Signature required | | | | | | | | |
| | 22018 | ECED 235 | G01 | 3 | INTRO LANG, LIT, RDG | | TBA | | ZAMORA, J'LANE |
| | 32904 | ECED 245 | G01 | MS2 2 | PROFESSIONALISM | | TBA | ONLINE WEB | MARTINEZ, HEATHER |
| | 22023 | ECED 255 | G01 | 3 | ASMNT OF CHLDRN/EVAL | | TBA | | ZAMORA, J'LANE |
| | 22027 | ECED 265 | G01 | 3 | GUIDING YOUNG CHILDREN | | TBA | | WINFREY, KRISTIN |
| ECON-ECONOMICS | | | | | | | | | |
| | 32765 | ECON 252G | G01 | 3 | PRNCPLS OF MICROECONS | | TBA | | MALDONADO, CLYDE |
| EDUC-EDUCATION | | | | | | | | | |
| | 34070 | EDUC 103 | G01 | MS1 1 | INTRNSHP-BIL ED/ESL | 1600-1715 | M | | VEGA, CRISTINA |
| | 28870 | EDUC 181 | G01 | MS2 1 | FIELD EXPERIENCE I | 1600-1715 | M | | VEGA, CRISTINA |
| | 30854 | EDUC 195 | G01 | MS1 1 | SPEC TOP PREP-DOSSIER | 1600-1715 | M | S-GROC | MARTINEZ, HEATHER |
| NOTE: | Milan Elementary | | | | | | | | |
| | 32814 | EDUC 195 | G02 | 3 | AL1 FUND OF TEACH RDG | 1600-1830 | T | | WINFREY, KRISTIN |
| NOTE: | Education Directors Signature Required | | | | | | | | |
| | 34069 | EDUC 195 | G03 | 3 | AL2 FUND OF READING II | 1600-1830 | R | | WINFREY, KRISTIN |
| NOTE: | Education Directors Signature Required | | | | | | | | |

| NOTE | CRN | COURSE | PTRM | CR | COURSE TITLE | TIME | DAY | PLACE | INSTRUCTOR |
|--|--|-----------|------|-------|----------------------------------|------------------------|---------|----------------------|----------------------|
| | 33156 | EDUC 195 | G04 | MS2 1 | AL3 NAVIGATE THE OPAL | 1600-1715 | M | S-GROC | MARTINEZ, HEATHER |
| NOTE: | <i>Milan Elementary</i> | | | | | | | | |
| | 34071 | EDUC 204 | G01 | 3 | FNDTNS OF BIL/ESL ED | | TBA | ONLINE WEB | RILEY, MELISSA |
| | 34072 | EDUC 219 | G01 | MS1 3 | PRE-TEACHER PREP | | TBA | ONLINE WEB | TBA |
| ELA - EDUC LEADERSHIP & ADMIN | | | | | | | | | |
| | 22050 | ELA 101 | G01 | MS1 1 | FRESHMAN ORIENTATION | | TBA | ONLINE WEB | O'CONNOR, KATHLEEN |
| | 33330 | ELA 250 | G02 | MS2 2 | INTRDN TO EDUCATION | | TBA | | O'CONNOR, KATHLEEN |
| ELT - ELECTRONICS TECHNOLOGY | | | | | | | | | |
| | 33878 | ELT 160 | G01 | 4 | DIGITAL ELCTRNCs I | 1030-1150 | MTWRF | GRGQ 050 | EVERSOLE, MARK |
| | 32867 | ELT 265 | G03 | 1 | SPEC TOP:INTRO 3D PRINT | 1730-1915 | R | GRGQ 050 | MCDOWELL, BRUCE |
| | 33409 | ELT 265 | G05 | 1 | SPEC TOPS: 3D PRINTING | 1030-1150 | F | GRGQ 050 | MCDOWELL, BRUCE |
| ENGL-ENGLISH | | | | | | | | | |
| | 28725 | ENGL 111G | G01 | 4 | RHETORIC/COMPOSITION | 1100-1240 | MW | GRGQ 107 | HUMPHREYS, ELIZABETH |
| | 28726 | ENGL 111G | G02 | 4 | RHETORIC/COMPOSITION | 1800-1940 | MW | GRGQ 106 | GLEASON, IRVING |
| | 28728 | ENGL 111G | G04 | 4 | RHETORIC/COMPOSITION | 1600-1740 | TR | GRGQ 106 | HUMPHREYS, ELIZABETH |
| | 28729 | ENGL 111G | G05 | 4 | RHETORIC/COMPOSITION | 0930-1110 | TR | GRGQ 107 | GLEASON, IRVING |
| | 28732 | ENGL 211G | G01 | 3 | WRITING IN HUMANTIES | 1730-1845 | MW | GRGQ 123 | HUMPHREYS, ELIZABETH |
| | 28731 | ENGL 218G | G01 | MS2 3 | TCHNCL & SCNTFC CMNCTN | 1730-2000 | M | GRGQ 101 | ERBEN, JOAN |
| | 32793 | ENGL 244G | G01 | 3 | LITERATURE AND CULTURE | | TBA | | ERBEN, JOAN |
| NOTE: | <i>Required weekly seminar, Thursdays 12:00-1:15pm</i> | | | | | | | | |
| ENGR-ENGINEERING | | | | | | | | | |
| | 30656 | ENGR 100 | G01 | 3 | INTRO TO ENGINEERING | 1600-1715 | MW | GRGQ 111 | HEBERT, JONATHAN |
| GEOG-GEOGRAPHY | | | | | | | | | |
| | 28906 | GEOG 111G | G01 | 4 | GEOG NATURAL ENVIR LABORATORY | 1300-1415 1300-1600 | MW T | GRGQ 112 GRGQ 112 | STOKOWSKI, DAVID |
| | 34046 | GEOG 257 | G01 | 4 | INTRO WEATHER SCIENCE | | TBA | ONLINE WEB | STOKOWSKI, DAVID |
| | 34042 | GEOG 291 | G01 | MS2 1 | SPEC TOPS: TAKE A HIKE | | TBA | | STOKOWSKI, DAVID |
| GOVT-GOVERNMENT | | | | | | | | | |
| | 32774 | GOVT 100G | G01 | 3 | AMER NATIONAL GOVT | | TBA | | SERBAN, WILLIAM |
| | 33934 | GOVT 100G | G02 | 3 | AMER NATIONAL GOVT | 1845-2000 | TR | | SERBAN, WILLIAM |
| HIST-HISTORY | | | | | | | | | |
| | 29087 | HIST 102G | G01 | 3 | MODERN EUROPE | | TBA | ONLINE WEB | SERBAN, WILLIAM |
| | 29088 | HIST 201G | G01 | 3 | INTRN-EARLY AMER HIST | 1900-2130 | T | GRGQ 102 | HOLMEN, LYLE |
| | 22274 | HIST 261 | G01 | 3 | NEW MEXICO HISTORY | | TBA | ONLINE WEB | SERBAN, WILLIAM |
| | 34000 | HIST 269 | G01 | 3 | HIST OF CIBOLA COUNTY | 1900-2015 | MW | GRGQ | SERBAN, WILLIAM |
| HNDS-HUMAN NUTRITION & DIET | | | | | | | | | |
| | 29164 | HNDS 251 | G01 | 3 | HUMAN NUTRITION | | TBA | ONLINE WEB | DIXON, CONSTANCE |
| | 29165 | HNDS 251 | G02 | MS2 3 | HUMAN NUTRITION | | TBA | ONLINE WEB | DIXON, CONSTANCE |
| | 30660 | HNDS 251 | G03 | MS1 3 | HUMAN NUTRITION | | TBA | ONLINE WEB | DIXON, CONSTANCE |

| NOTE | CRN | COURSE | PTRM | CR | COURSE TITLE | TIME | DAY | PLACE | INSTRUCTOR |
|---------------------------------|--|-----------|------|-------|---------------------------|-----------|------|------------|------------------------------------|
| MATH-MATHEMATICS | | | | | | | | | |
| | 28888 | MATH 112G | G01 | 3 | FUND ELEM MATH II | 1730-1845 | MW | GRGQ 123 | CHAVEZ-TOIVANEN, M |
| | 28889 | MATH 120 | G01 | 3 | INTERMEDIATE ALGEBRA | 1000-1140 | TR | GRGQ 102 | CHAVEZ-TOIVANEN, M |
| | 28890 | MATH 120 | G02 | 3 | INTERMEDIATE ALGEBRA | 1730-1855 | TR | GRGQ 123 | LOWTHER, MARK |
| | 28891 | MATH 120 | G03 | 3 | INTERMEDIATE ALGEBRA | | TBA | ONLINE WEB | CHAVEZ-TOIVANEN, M |
| | 28892 | MATH 121G | G01 | 3 | COLLEGE ALGEBRA | 1300-1440 | TR | GRGQ 101 | BISHOP, DAVID |
| | 28893 | MATH 121G | G02 | 3 | COLLEGE ALGEBRA | | TBA | ONLINE WEB | MAC KENDRICK, S |
| | 28894 | MATH 142G | G01 | 3 | BUS/BIOLOGICAL CALCULUS I | 1300-1440 | MW | GRGQ 102 | BISHOP, DAVID |
| | 29293 | MATH 190G | G01 | 4 | TRIG AND PRE-CALCULUS | 1000-1210 | MW | GRGQ 102 | BISHOP, DAVID |
| | 34003 | MATH 210G | G01 | 3 | MATH APPRECIATION | | TBA | ONLINE WEB | CHAVEZ-TOIVANEN, M |
| NA - NURSING ASSISTANT | | | | | | | | | |
| | 32740 | NA 104 | G01 | 3 | NURS ASST FUND | | TBA | ONLINE WEB | GALLAGHER, NEAL |
| | 33016 | NA 104 L | G01 | 1 | NA LAB | | TBA | ONLINE WEB | GALLAGHER, NEAL |
| | 22371 | NA 105 | G01 | 4 | NURS ASST CLIN | | TBA | ONLINE WEB | KURTH, KATHLEEN GALLAGHER, NEAL |
| OECS-COMPUTER TECHNOLOGY | | | | | | | | | |
| | 30609 | OECS 125 | G01 | 3 | OPERATING SYSTEMS | | TBA | ONLINE WEB | HENRY, KAREN |
| | 33799 | OECS 185 | G01 | 3 | PC MAINT/SELECTION I | | TBA | | HENRY, KAREN |
| | 30640 | OECS 204 | G01 | 3 | LINUX OPERATING SYSTEM | | TBA | ONLINE WEB | TBA |
| | 30641 | OECS 207 | G01 | 3 | WINDOWS | | TBA | ONLINE WEB | HENRY, KAREN |
| | 30642 | OECS 209 | G01 | MS2 1 | CMPTER GRPHC ARTS | | TBA | ONLINE WEB | HOGUE, NENDERLE |
| | 30644 | OECS 215 | G01 | 3 | SPRDSHT APPLCTNS | | TBA | ONLINE WEB | GALLEGOS, GABRIEL |
| | 30645 | OECS 221 | G01 | 3 | INTERNSHIP I | 1600-1715 | TR | GRGN 301 | HENRY, KAREN |
| | 28861 | OECS 230 | G01 | MS1 3 | DATA CMNCTN/NTWRKS I | | TBA | | HENRY, KAREN |
| | 28862 | OECS 231 | G01 | MS2 3 | DATA CMNCTNS/NTWRK II | | TBA | | HENRY, KAREN |
| | 31549 | OECS 280 | G01 | MS2 3 | DESKTOP PUBLISHING I | | TBA | | ALLEN-WEBB, MARY |
| OEEM- PARAMEDIC | | | | | | | | | |
| | 29097 | OEEM 101 | G01 | SC 1 | CPR HEALTH CARE | 0900-1600 | S | GRGM 200 | DESOTO, TOMASITA |
| NOTE: | January 23 & January 30 | | | | | | | | |
| | 29098 | OEEM 101 | G02 | SC 1 | CPR HEALTH CARE | 0900-1600 | S | GRGM 200 | DESOTO, TOMASITA |
| NOTE: | March 5 & March 12 | | | | | | | | |
| | 31734 | OEEM 101 | G40 | SC 1 | CPR HEALTH CARE | 1325-1415 | RF | | OTERO, DANIEL |
| | 31736 | OEEM 101 | G41 | SC 1 | CPR HEALTH CARE | 1325-1415 | RF | | MILLER, GARY |
| | 33896 | OEEM 115 | G01 | MS2 3 | FIRST RESP PRE-HOS PRO | 0800-1800 | S | GRGN 309 | DESOTO, TOMASITA |
| NOTE: | Students must be 16 years old or older | | | | | | | | |
| | 34005 | OEEM 155 | G01 | SC 1 | WILDERNESS/REMOTE | 1700-2100 | MTWR | S-GROC 1 | WHITING, DONALD |
| NOTE: | January 25 - January 28 | | | | | | | | |
| P E-PHYSICAL EDUCATION | | | | | | | | | |
| | 34047 | P E 127 | G01 | MS1 1 | CARDIO-KICKBOXING | 0900-1015 | TR | GRGM 220 | TBA |
| | 34048 | P E 127 | G02 | MS2 1 | CARDIO-KICKBOXING | 0900-1015 | TR | GRGM 220 | TBA |
| | 32818 | P E 199 | G01 | MS1 1 | YOGA | 1715-1830 | MW | | FLETCHER, VONDA |
| | 32819 | P E 199 | G02 | MS2 1 | YOGA | 1715-1830 | MW | | FLETCHER, VONDA |
| | 32820 | P E 270 | G01 | MS1 1 | SPECIAL TOPICS: ZUMBA | 1200-1315 | TR | | GARCIA, SHALYN |
| | 25040 | P E 270 | G02 | MS2 1 | SPECIAL TOPICS: ZUMBA | 1200-1315 | TR | | GARCIA, SHALYN |

| NOTE | CRN | COURSE | PTRM | CR | COURSE TITLE | TIME | DAY | PLACE | INSTRUCTOR |
|---|-------|---------------|------|----|-------------------------------|-----------|-----|------------|--------------------|
| PHIL-PHILOSOPHY | | | | | | | | | |
| | 34001 | PHIL 101G G01 | | 3 | THE ART OF WONDERING | | TBA | ONLINE WEB | ERBEN, JOAN |
| NOTE: Seminar, alternate Tuesdays 12:00-1:00pm | | | | | | | | | |
| | 29093 | PHIL 201G G01 | | 3 | INTRN TO PHILOSOPHY | 1730-1845 | TR | GRGQ 102 | COLLINS, RANDOLPH |
| PHLS-PUBLIC HEALTH SCIENCES | | | | | | | | | |
| | 33877 | PHLS 150G G01 | | 3 | PERSONAL HLTH & WELLNESS | | TBA | | BROACH, NANCY |
| PHYS-PHYSICS | | | | | | | | | |
| | 34107 | PHYS 215G G01 | | 3 | ENGINEERING PHYS I | | TBA | | STOKOWSKI, DAVID |
| | 34058 | PHYS 215GLG01 | | 1 | ENGR PHYS I LAB LABORATORY | | TBA | | STOKOWSKI, DAVID |
| PSY-PSYCHOLOGY | | | | | | | | | |
| | 22904 | PSY 201G G01 | | 3 | INTRDN-PSYCHOLOGY | | TBA | ONLINE WEB | PAYETTE, BRUCE |
| | 22909 | PSY 201G G02 | | 3 | INTRDN-PSYCHOLOGY | | TBA | | PAYETTE, BRUCE |
| | 30882 | PSY 290 G01 | | 3 | PSY OF ADJUSTMENT | | TBA | ONLINE WEB | COATS, MELISSA |
| S WK-SOCIAL WORK | | | | | | | | | |
| | 30883 | S WK 253 G01 | | 3 | CASE MANAGEMENT | | TBA | ONLINE WEB | COATS, MELISSA |
| SOC-SOCIOLOGY | | | | | | | | | |
| | 29035 | SOC 101G G01 | | 3 | INTRDRY SOCIOLOGY | | TBA | | MEEHAN, TERESA |
| | 33938 | SOC 201G G01 | | 3 | CNTMPRY SOCIAL PRBMS | | TBA | | MEEHAN, TERESA |
| SPAN-SPANISH | | | | | | | | | |
| | 32942 | SPAN 111 G01 | | 4 | ELEMENTARY SPANISH I | 1600-1740 | TR | GRGQ 104 | VEGA, CRISTINA |
| | 29096 | SPAN 112 G01 | | 4 | ELEMENTARY SPANISH II | 1730-1910 | TR | GRGQ 112 | CHAVEZ, ORIETA |
| STAT-STATISTICS | | | | | | | | | |
| | 34004 | STAT 251G G01 | | 3 | STAT-BSN/BHVRL SCNCS | 1000-1115 | TR | GRGQ 103 | BISHOP, DAVID |
| THTR-THEATRE | | | | | | | | | |
| | 34002 | THTR 101G G01 | | 3 | WORLD OF THEATRE | 1200-1430 | W | GRGQ 101 | ERBEN, JOAN |
| W S-WOMEN'S STUDIES | | | | | | | | | |
| | 33941 | W S 202G G01 | | 3 | REP WOMEN ACROSS CULT | | TBA | | COATS, MELISSA |
| WELD-WELDING TECHNOLOGY | | | | | | | | | |
| | 22532 | WELD 115 G01 | | 6 | STRCTRL WELDING II | 0815-1200 | TR | GRGQ 051A | SANDOVAL, ALEX |
| | 29028 | WELD 120 G01 | | 3 | BASIC METALLURGY | 1500-1645 | MW | GRGQ 050 | GUTIERREZ, RICHARD |
| | 22530 | WELD 130 G01 | | 3 | INTRO TO GMAW (MIG) | 1700-1845 | TR | GRGQ 051 | GUTIERREZ, RICHARD |
| | 22531 | WELD 140 G01 | | 3 | INTRO TO GTAW (TIG) | 1700-1845 | MW | GRGQ 051 | GUTIERREZ, RICHARD |
| | 22534 | WELD 211 G01 | | 6 | WELDER QUALIFICATION | 1300-1645 | MW | GRGQ 051 | GUTIERREZ, RICHARD |
| | 22535 | WELD 295 G01 | | 3 | SPEC TOP: METAL ART II | 0700-0845 | MW | GRGQ 051A | ESTEVEAN, ROBERT |
| | 33983 | WELD 295 G02 | | 1 | SKILLS USA | 0800-0945 | F | GRGQ 050 | GUTIERREZ, RICHARD |

Spring 2016 - 8 Week I (MS1)

January 20 – March 11

| NOTE | CRN | COURSE | PTRM | CR | COURSE TITLE | TIME | DAY | PLACE | INSTRUCTOR |
|--|-------|-----------|------|-------|------------------------|-----------|------|------------|--------------------|
| C S-COMPUTER SCIENCE | | | | | | | | | |
| | 32762 | C S 110 | G06 | MS1 3 | COMPUTER LITERACY | | TBA | | HOGUE, NENDERLE |
| CCDM-DEVELOPMENTAL MATHEMATICS | | | | | | | | | |
| | 28876 | CCDM 103N | G01 | MS1 4 | PREALGEBRA | 1000-1210 | MTWR | GRGQ 124 | LYONS, CONNIE |
| CMT-CREATIVE MEDIA TECHNOLOGY | | | | | | | | | |
| | 33796 | CMT 180 | G01 | MS1 3 | DESIGN PRINCIPLES | | TBA | | CUCCIARDI, LARA |
| ECED-EARLY CHILDHOOD EDUCATION | | | | | | | | | |
| | 28869 | ECED 125 | G01 | MS1 2 | HEALTH,SAFETY & NUTR | | TBA | ONLINE WEB | WINFREY, KRISTIN |
| EDUC-EDUCATION | | | | | | | | | |
| | 34070 | EDUC 103 | G01 | MS1 1 | INTRNSHP-BIL ED/ESL | 1600-1715 | M | | VEGA, CRISTINA |
| | 30854 | EDUC 195 | G01 | MS1 1 | SPEC TOP- PREP DOSSIER | 1600-1715 | M | S-GROC | MARTINEZ, HEATHER |
| NOTE: <i>Milan Elementary</i> | | | | | | | | | |
| | 34072 | EDUC 219 | G01 | MS1 3 | PRE-TEACHER PREP | | TBA | ONLINE WEB | TBA |
| ELA - EDUC LEADERSHIP & ADMIN | | | | | | | | | |
| | 22050 | ELA 101 | G01 | MS1 1 | FRESHMAN ORIENTATION | | TBA | ONLINE WEB | O'CONNOR, KATHLEEN |
| HNDS-HUMAN NUTRITION & DIET | | | | | | | | | |
| | 30660 | HNDS 251 | G03 | MS1 3 | HUMAN NUTRITION | | TBA | ONLINE WEB | DIXON, CONSTANCE |
| OECS-COMPUTER TECHNOLOGY | | | | | | | | | |
| | 28861 | OECS 230 | G01 | MS1 3 | DATA CMNCTN/NTWRKS I | | TBA | | HENRY, KAREN |
| P E-PHYSICAL EDUCATION | | | | | | | | | |
| | 34047 | P E 127 | G01 | MS1 1 | CARDIO-KICKBOXING | 0900-1015 | TR | GRGM 220 | TBA |
| | 32818 | P E 199 | G01 | MS1 1 | YOGA | 1715-1830 | MW | | FLETCHER, VONDA |
| | 32820 | P E 270 | G01 | MS1 1 | SPEC TOPICS: ZUMBA | 1200-1315 | TR | | GARCIA, SHALYN |

Classes can be added, cancelled and changed throughout the semester
 Log in to [myNMSU](#) to view current changes

Spring 2016 - 8 Week II (MS2)

March 21 – May 13

| NOTE | CRN | COURSE | PTRM | CR | COURSE TITLE | TIME | DAY | PLACE | INSTRUCTOR |
|---|-------|-----------|------|-------|------------------------|-----------|------|------------|--------------------|
| BIOL-BIOLOGY | | | | | | | | | |
| | 33157 | BIOL 250 | G01 | MS2 1 | SPEC TOPS: TAKE A HIKE | | TBA | | BASSEN, RACHELLE |
| C S-COMPUTER SCIENCE | | | | | | | | | |
| | 31732 | C S 110 | G05 | MS2 3 | COMPUTER LITERACY | | TBA | | GNODLE, JERMANE |
| CCDM-DEVELOPMENTAL MATHEMATICS | | | | | | | | | |
| | 28883 | CCDM 114N | G01 | MS2 4 | ALGEBRA SKILLS | 1000-1210 | MTWR | GRGQ 124 | LYONS, CONNIE |
| CMT-CREATIVE MEDIA TECHNOLOGY | | | | | | | | | |
| | 30152 | CMT 120 | G01 | MS2 3 | INTRO TO CRTVE MEDIA | | TBA | ONLINE WEB | BURDS, CATHERINE |
| COLL-COLLEGE | | | | | | | | | |
| | 29640 | COLL 101 | G02 | MS2 3 | COLLEGE/LIFE SUCCESS | 1400-1630 | TR | GRGQ 123 | TBA |
| DANC-DANCE | | | | | | | | | |
| | 33999 | DANC 122 | G01 | MS2 1 | INTRO TO LATIN SOCIAL | 1730-1930 | T | GRGM 220 | ROMERO, ALFRED |
| ECED-EARLY CHILDHOOD EDUCATION | | | | | | | | | |
| | 32904 | ECED 245 | G01 | MS2 2 | PROFESSIONALISM | | TBA | ONLINE WEB | MARTINEZ, HEATHER |
| EDUC-EDUCATION | | | | | | | | | |
| | 28870 | EDUC 181 | G01 | MS2 1 | FIELD EXPERIENCE I | 1600-1715 | M | | VEGA, CRISTINA |
| | 33156 | EDUC 195 | G04 | MS2 1 | AL3 NAVIGATE THE OPAL | 1600-1715 | M | S-GROC | MARTINEZ, HEATHER |
| NOTE: Milan Elementary | | | | | | | | | |
| ELA - EDUC LEADERSHIP & ADMIN | | | | | | | | | |
| | 33330 | ELA 250 | G02 | MS2 2 | INTRDN TO EDUCATION | | TBA | | O'CONNOR, KATHLEEN |
| ENGL-ENGLISH | | | | | | | | | |
| | 28731 | ENGL 218G | G01 | MS2 3 | TCHNCL & SCNTFC CMNCTN | 1730-2000 | M | GRGQ 101 | ERBEN, JOAN |
| GEOG-GEOGRAPHY | | | | | | | | | |
| | 34042 | GEOG 291 | G01 | MS2 1 | SPEC TOPS: TAKE A HIKE | | TBA | | STOKOWSKI, DAVID |
| HNDS-HUMAN NUTRITION & DIET | | | | | | | | | |
| | 29165 | HNDS 251 | G02 | MS2 3 | HUMAN NUTRITION | | TBA | ONLINE WEB | DIXON, CONSTANCE |
| OECS-COMPUTER TECHNOLOGY | | | | | | | | | |
| | 30642 | OECS 209 | G01 | MS2 1 | CMPTER GRPHC ARTS | | TBA | ONLINE WEB | HOGUE, NENDERLE |
| | 28862 | OECS 231 | G01 | MS2 3 | DATA CMNCTNS/NTWRK II | | TBA | | HENRY, KAREN |
| | 31549 | OECS 280 | G01 | MS2 3 | DESKTOP PUBLISHING I | | TBA | | ALLEN-WEBB, MARY |
| OEEM- PARAMEDIC | | | | | | | | | |
| | 33896 | OEEM 115 | G01 | MS2 3 | FIRST RESP PRE-HOS PRO | 0800-1800 | S | GRGN 309 | DESOTO, TOMASITA |
| NOTE: Students must be 16 years old or older | | | | | | | | | |
| P E-PHYSICAL EDUCATION | | | | | | | | | |
| | 34048 | P E 127 | G02 | MS2 1 | CARDIO-KICKBOXING | 0900-1015 | TR | GRGM 220 | TBA |
| | 32819 | P E 199 | G02 | MS2 1 | YOGA | 1715-1830 | MW | | FLETCHER, VONDA |
| | 25040 | P E 270 | G02 | MS2 1 | SPECIAL TOPIC: ZUMBA | 1200-1315 | TR | | GARCIA, SHALYN |

Classes can be added, cancelled and changed throughout the semester

Log in to myNMSU to view current changes

Spring 2016 - Short Courses (SC)

| NOTE | CRN | COURSE | PTRM | CR | COURSE TITLE | TIME | DAY | PLACE | INSTRUCTOR | |
|------------------------|------------------------------------|----------|------|----|--------------|-------------------|-----------|-------|------------|------------------|
| OEEM- PARAMEDIC | | | | | | | | | | |
| | 29097 | OEEM 101 | G01 | SC | 1 | CPR HEALTH CARE | 0900-1600 | S | GRGM 200 | DESOTO, TOMASITA |
| NOTE: | <i>January 23 & January 30</i> | | | | | | | | | |
| | 29098 | OEEM 101 | G02 | SC | 1 | CPR HEALTH CARE | 0900-1600 | S | GRGM 200 | DESOTO, TOMASITA |
| NOTE: | <i>March 5 & March 12</i> | | | | | | | | | |
| | 34005 | OEEM 155 | G01 | SC | 1 | WILDERNESS/REMOTE | 1700-2100 | MTWR | S-GROC 1 | WHITING, DONALD |
| NOTE: | <i>January 25 - January 28</i> | | | | | | | | | |

Dual Credit Course (High School Students Only)

| NOTE | CRN | COURSE | PTRM | CR | COURSE TITLE | TIME | DAY | PLACE | INSTRUCTOR | |
|-----------------------------------|--|----------|------|-----|--------------|-------------------------------------|------------------------|--------|------------|------------------|
| AUTO-AUTOMOTIVE TECHNOLOGY | | | | | | | | | | |
| | 34101 | AUTO 112 | G40 | | 5 | BASIC GASOLINE ENGINE LABORATORY | 0810-0840 0845-1000 | MTWR | GRGQ 052 | GARCIA, PAUL |
| | 34102 | AUTO 117 | G40 | | 5 | ELT ANLYS TUNE-UP GAS LABORATORY | 1020-1050 1100-1205 | MTWR | GRGQ 052 | GARCIA, PAUL |
| | 29046 | AUTO 255 | G40 | | 1 | SPCL PRBLMS IN AUTO | 0810-1000 | F | GRGQ 052 | GARCIA, PAUL |
| NOTE: | <i>Non Dual Credit students can register with instructor approval only</i> | | | | | | | | | |
| | 29048 | AUTO 255 | G41 | | 1 | SPCL PRBLMS IN AUTO | 1020-1205 | F | GRGQ 052 | GARCIA, PAUL |
| NOTE: | <i>Non Dual Credit students can register with instructor approval only</i> | | | | | | | | | |
| | 32932 | AUTO 295 | G40 | | 4 | SP TOP:INTRO DIESEL ENG | 1830-2030 | MW | GRGQ 052 | WORTHEN, ERIC |
| NOTE: | <i>Non Dual Credit students can register with instructor approval only</i> | | | | | | | | | |
| C J-CRIMINAL JUSTICE | | | | | | | | | | |
| | 30262 | C J 199 | G40 | SC | 3 | SP TOP: JOLT | 0700-1700 | MTWRFS | GRGM 200 | ARANDA, AMBROSIA |
| | 30263 | C J 199 | G41 | SC | 3 | SP TOP: ADVANCED JOLT | 0700-1700 | MTWRFS | GRGM 200 | ARANDA, AMBROSIA |
| COLL-COLLEGE | | | | | | | | | | |
| | 30154 | COLL 101 | G40 | MS2 | 3 | COLLEGE/LIFE SUCCESS | | TBA | | STOKOWSKI, DAVID |
| | 33299 | COLL 101 | G41 | MS2 | 3 | COLLEGE/LIFE SUCCESS | 1013-1103 | MTWRF | | VIGIL, ANTONIO |
| | 33301 | COLL 101 | G42 | MS2 | 3 | COLLEGE/LIFE SUCCESS | 1107-1157 | MTWRF | | VIGIL, ANTONIO |
| OEEM- PARAMEDIC | | | | | | | | | | |
| | 31734 | OEEM 101 | G40 | MS2 | 1 | CPR HEALTH CARE | 1325-1415 | RF | | OTERO, DANIEL |
| | 31736 | OEEM 101 | G41 | MS2 | 1 | CPR HEALTH CARE | 1325-1415 | RF | | MILLER, GARY |

Get Involved with Student Organizations



The Associated Student Government is the student government entity for NMSU Grants. This organization has been established to provide student input to campus administrators, organize and support student activities, and assistance with various campus events. **If you're interested in campaigning to be a member of the ASG Board, please contact Brian Johnson at (505) 287-6629 or bpjohns@nmsu.edu**



The mission of the NMSU Grants Native American Club is to promote holistic well-being of NMSU Native American students through spiritual (PURPOSE), mental (MIND), social (RELATIONS), and physical (BODY) aspects and making educational connections to our goals, endeavors, and communities. **For more information, contact Sascha Larrabee at (505) 287-6677 or larrabee@nmsu.edu**



SkillsUSA is a national organization that encourages leadership for vocational students to help them achieve their potential as leaders in their chosen fields of study. There is an annual competition in 92 different areas, including speech, cosmetology, spirit award, welding, aircraft maintenance, graphic arts, machinery, computer animation, nursing, and the movie industry. **For more information, contact Richard Gutierrez at (505) 287-6645 or richardg@nmsu.edu or Paul Garcia at (505) 287-6635 or pgarcia7@nmsu.edu**



**Student
Business
Club**

The mission/objectives of the Student Business Club shall be to represent the NMSU Grants campus through active engagement in the Grants community in an effort to encourage student networking, promote the future employment of NMSU Grants students, and to educate NMSU Grants students concerning business professionalism and success in the world of business locally, regionally, nationally, and globally. **For more information, contact Lisa Whitmore at lisaw@nmsu.edu or Annette Mariano at ammaria@nmsu.edu or call (505) 287-6678**



**New Mexico State University Grants
1500 N. Third St, Grants, NM 87020
(505) 287-6678**

www.grants.nmsu.edu